

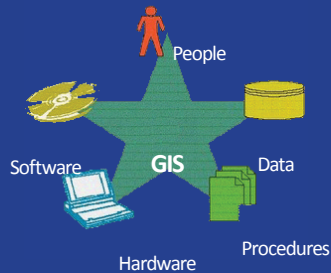


## WE HAVE THE TOOLS...

### HSW GIS Integration:

- Data Analysis
- Custom Maps
- Charts
- Graphics
- Reports

### GIS Components:



### Environmental

Contamination Assessment and Pollutant Distribution Maps, Brownfield Environmental Assesments, Vegetative Surveys, Potential Chemical Releases, Wetland Acreage Analysis, Landfill Studies, Site Analysis for HUD Designated Properties

### Water Resources

BMAP (Basin Management Action Plans), Minimum Flow Models and Analysis, Water Quality Data Analysis, On-going Pollution Problem Areas (Pump Stations, Outflow Areas)

### Civil / Land Development

Site Drainage Issues, Contour Mapping, Land Development Plans, Asset Management

### Military Engineering

3D Virtual Simulations, Line of Sight, Range Design Maps and Graphics



Incorporated in the State of Florida in 1988, HSW Engineering is an integrated earth science and engineering firm providing proactive, innovative, and cost-effective solutions for Environmental, Water Resources and Civil / Land Development projects. HSW has distinguished itself as a leader in the environmental industry by adhering to its philosophy of strategic long-range management of environmental concerns. This successful philosophy revolves around a project organizational structure that always includes one of the firm's principals to maintain strict quality assurance, effective communication and senior leadership. HSW has successfully applied innovative strategies to technical and regulatory issues nationwide, resulting in substantial cost and time savings. This approach assures our clients of the best possible service and value and is a key reason that over 90% of our work comes from previous customers.

## LOCATIONS

### Main Office: Tampa

3820 Northdale Blvd., Suite 210B  
Tampa, FL 33624  
(813) 968-7722 (phone)  
(813) 962-2406 (fax)

### Orlando

605 East Robinson St., Suite 308  
Orlando, FL 32801  
(407) 872-6893

### Gainesville

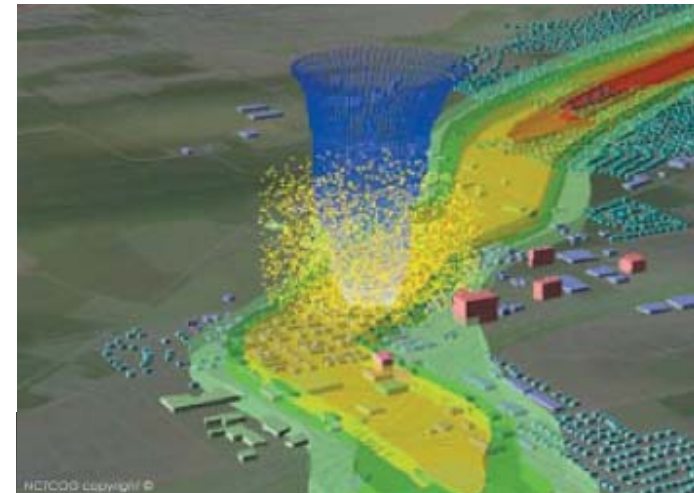
8000 NE 51st Street  
Gainesville, FL 32609  
(352) 371-7841

### Sarasota

4411 Bee Ridge Road, Box #305  
Sarasota, FL 34233  
(941) 378-3074

HSWENG.COM

Engineering & Scientific solutions  
within your reach...



GIS

GEOGRAPHIC INFORMATION SYSTEMS

# SOLUTIONS

HSW provides the foundation for GIS technology...

Making smart decisions demands reliable answers to tough questions. HSW's GIS solutions empower you to cut through the data clutter and see how to improve efficiency, enhance service to the public, and streamline your operations.

## OUR TEAM

Most organizations have new and legacy data stored in a wide variety of formats. Using GIS technology, we can integrate and relate data using its spatial component (location). For example, people can be associated to addresses, buildings to parcels, pipelines to utility networks, or land use to areas. This information can then be analyzed to discover trends, relationships or other insights—such as the incidence of pipe corrosion to soil types, age of pipe and pipe material. For functions in areas such as planning, public works, engineering, emergency response, or customer service, HSW GIS solutions can help you solve puzzling questions.

**Jennifer Lana, M.S., GISP, Senior Scientist / GIS Specialist** leads HSW's GIS services. With a diverse educational background in geology and geography, she has spent the past 10 years working in both the public and private sectors. She developed a number of GIS mapping applications while working at the Environmental Protection Commission of Hillsborough County, Florida and assisted with the procurement of GIS and other Information Technology products and support. Her responsibilities were many and varied during the 4 years she worked as a contract GIS Manager for the U.S. Department of Energy at the Hanford Nuclear Site near Richmond, WA. Subsequent to her graduation, Ms. Lana worked for 2 years at the Mississippi Department of Environmental Quality.

## WHY GIS?

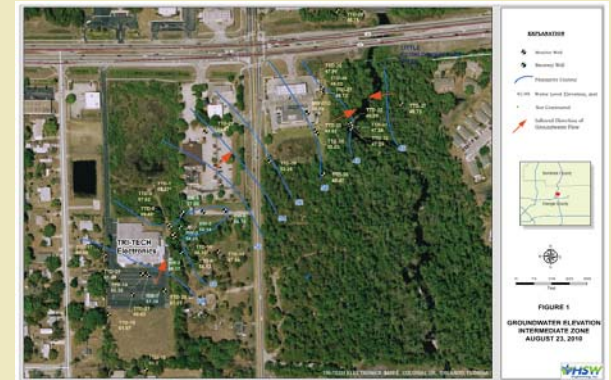
GIS technology can be used for: earth surface based scientific investigations; resource management, reference, and projections of a geospatial nature—both manmade and natural; asset management and location planning; archaeology; environmental impact study; infrastructure assessment and development; urban planning; cartography, for a thematic and/or time based purpose; criminology; GIS data development geographic history; marketing; logistics; population and demographic studies; prospectivity mapping; location attributes applied statistical analysis; warfare assessments; and other purposes.

Examples of use are: GIS may allow emergency planners to easily calculate emergency response times and the movement of response resources (for logistics) in the case of a natural disaster; GIS might be used too to find wetlands that need protection strategies regarding pollution; or GIS can be used by a company to site a new business location to take advantage of GIS data identified trends to respond to a previously under-served market.

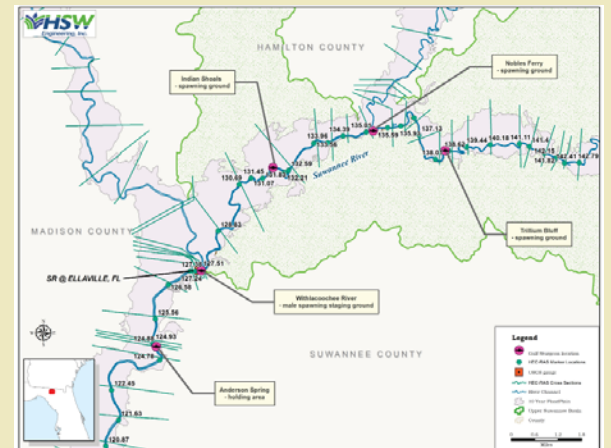
## BENEFITS OF GIS

- Enhanced capability/New applications
  - Cost savings/Operational efficiencies
- Better data management
  - Promote data sharing
- Enhanced communication
  - Facilitate decision making
  - Better decisions

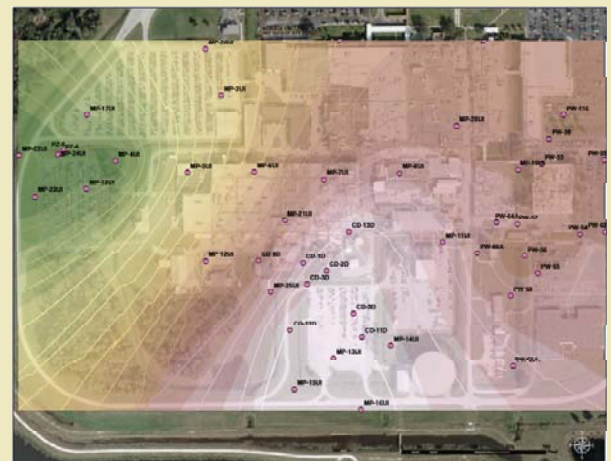
## KEY PROJECTS



Groundwater Modeling for Private Industry



Environmental Assessment for Water Management District



Monitoring Well Site Analysis for Industrial Site